

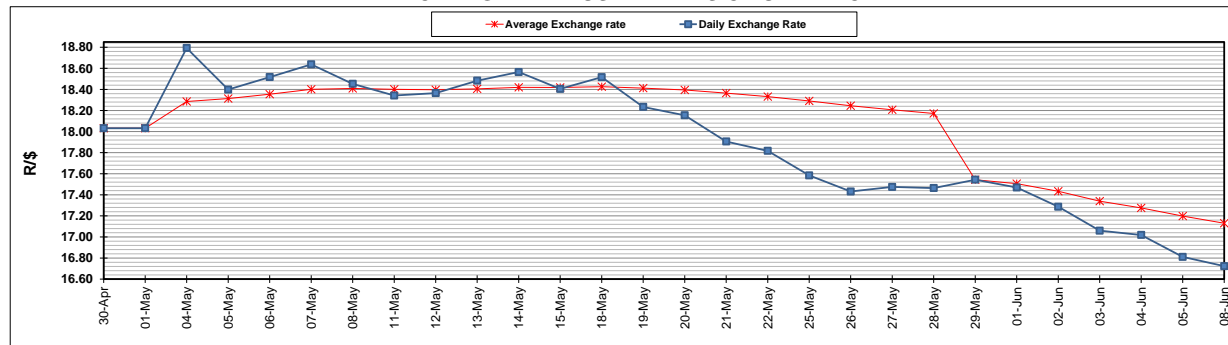
	PETROL 95 ULP	PETROL 93 ULP & LRP	DIESEL 0.05%	DIESEL 0.005%	ILL. PAR.
GAUTENG PUMP PRICE (SA c/l) AS FROM 03/06/2020	1,340.000	1,320.000	-	-	-
WHOLESALE PRICE (SA c/l) AS FROM 03/06/2020	-	-	1,130.560	1,138.960	489.828
SINGLE NATIONAL MAXIMUM RETAIL PRICE	-	-	-	-	597.000
BASIC FUEL PRICE - 08/06/2020 (SA c/l)	548.888	530.378	545.295	549.646	494.090
PRESS RELEASE CONTRIBUTION TO BFP 03/06/2020 - 08/06/2020 (SA c/l)	392.770	382.770	379.630	388.030	285.128
UNIT OVER/(UNDER) RECOVERY - 08/06/2020 (SA c/l)	(156.118)	(147.608)	(165.665)	(161.616)	(208.962)
AVERAGE BASIC FUEL PRICE 29/05/2020 - 08/06/2020	511.710	490.673	511.703	516.294	458.688
AVERAGE UNIT OVER/(UNDER) RECOVERY 29/05/2020 - 08/06/2020	(169.512)	(158.475)	(141.502)	(137.264)	(190.703)

ANALYSIS MOVEMENT OF AVERAGE OVER/(UNDER) RECOVERY

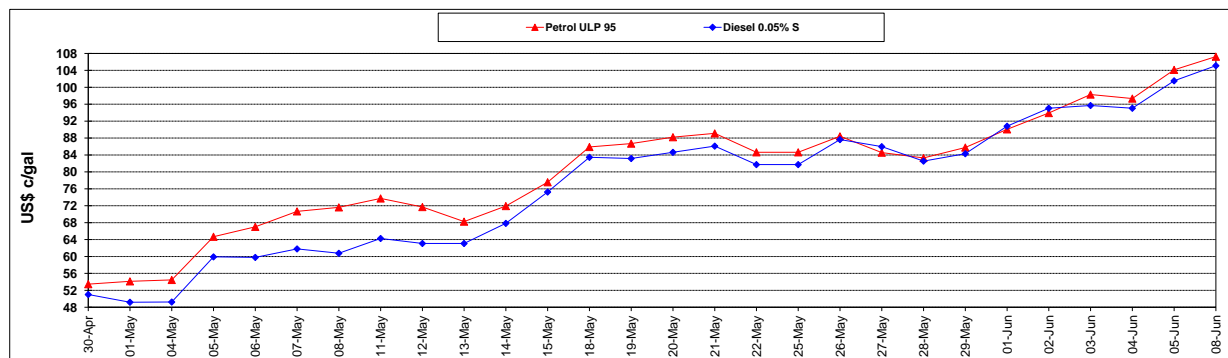
	PETROL 95	PETROL 93	DIESEL 0.05%	DIESEL 0.005%	ILL. PAR.
- MOVEMENT IN INTERNATIONAL PRODUCT PRICES	(200.613)	(188.298)	(172.604)	(168.645)	(218.583)
- MOVEMENT IN EXCHANGE RATE	31.102	29.824	31.102	31.381	27.880
AVERAGE UNIT OVER/(UNDER) RECOVERY 29/05/2020 - 08/06/2020	(169.512)	(158.475)	(141.502)	(137.264)	(190.703)

R/\$ EXCHANGE RATE - (R/\$16.7232 - 08/06/2020)

EXCHANGE RATE USED IN BASIC FUEL PRICE



INTERNATIONAL PRODUCT PRICES OF BASKET USED IN BASIC FUEL PRICE



BASIC FUEL PRICE IN SA CENTS PER LITRE

